

17 KM OR 31 KM

Foldens Sweaburg Salford

Experience Level: Easy to moderate, recreational ride

Route Surface: Paved, except for 1.25 km side road to/from Trillium Woods

Length: 17 or 31 KM

Route Description:

Take a leisurely ride along quiet country roads to get the real feel for Oxford County. Located close to Ingersoll and Woodstock, the Foldens start location is easy to access for a short tour. If feeling energetic and have a bit more experience riding on roads, consider extending the ride an additional 14 km with another peaceful country road loop through Salford and back.



Route highlights include stops for maple tarts and country market shopping at [Leaping Deer Adventure Farm and Market](#). With the maple theme continuing, take a turn off on Trillium Line to [Jakeman's Maple Farm](#). While there, simply cross the road to check out the lush forest and trail through the Trillium Woods.

If taking the longer route be sure to stop at The Village Cheese Mill at the cross roads shortly after the 25 km mark. Cruise back into Foldens from either ride to continue on with the day out.

Route Option and Notes:

Extend the ride by adding an additional 14 km loop. Longer route recommended for cyclists with more experience riding on roads due to higher traffic volumes on route north from Salford. If less experienced, consider riding on gravel shoulder for this 2 km stretch along Plank Road/County Road 19.

Starting Point Options:

C Convenience W Water Bottle D Dining P Patio A ATM P Parking P Picnic W Washrooms ⌚ Some day of week/seasonal hours*		
Foldens Hall	374091 Foldens Line	P
Leaping Deer Adventure Farm	544212 Clarke Rd.	W D P A P W ⌚

Starting Point Notes:

- [Leaping Deer Adventure Farm](#): Open June-Oct, Fri-Sun

Stay Social:

- Share your Ride: @TourismOxford [#RideOxford](#)
- [View Full Map](#) & Routes
- Ask us to mail you a [Cycling Map](#)
- [Sign Up](#) for our Cycling Email Updates (3 per year)

We saved the best seat for you!

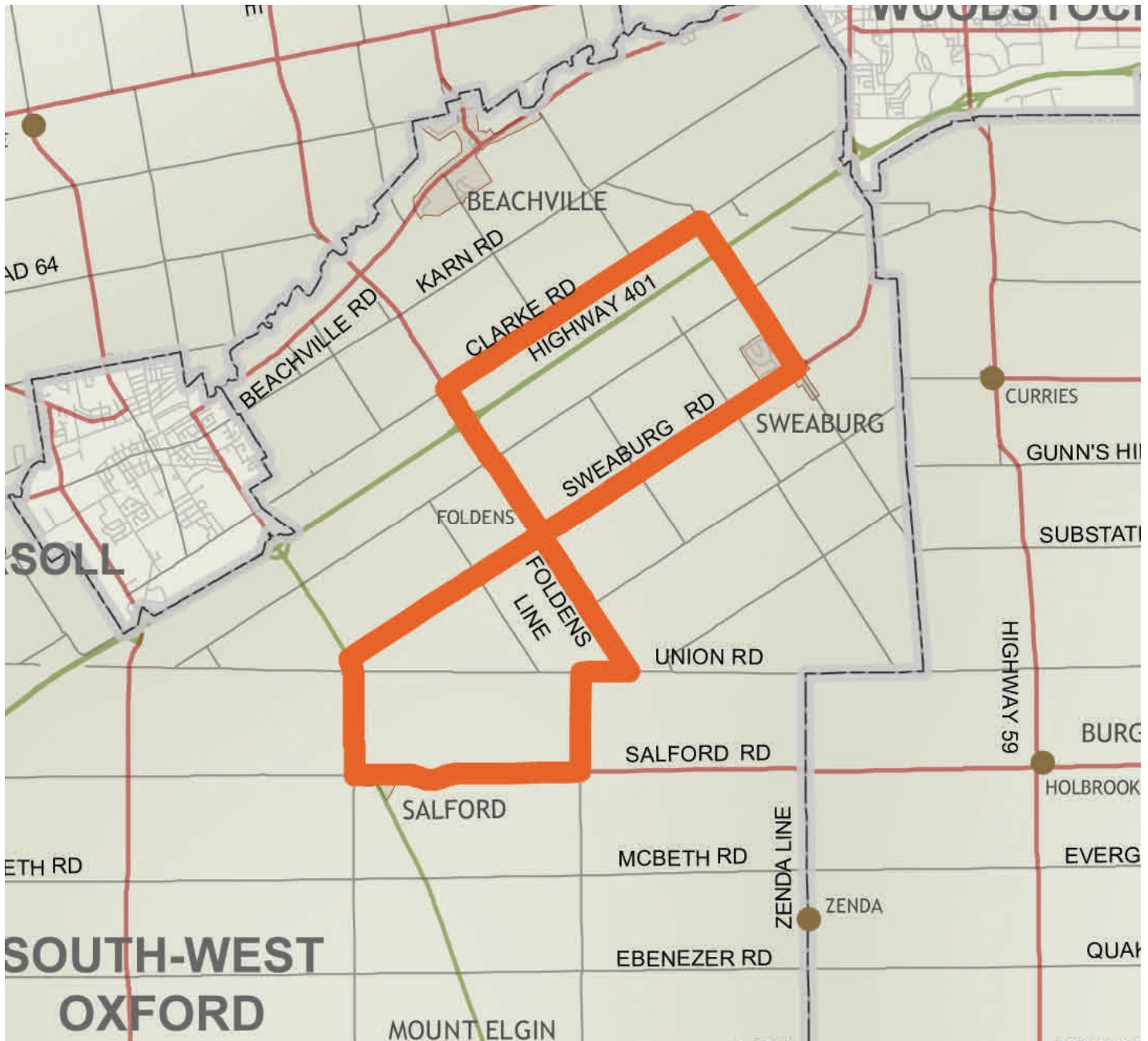
rideoxford.ca

Tourism@Oxford
our rural roots are showing



17
KM OR 31
KM

Foldens Sweaburg Salford



View This Route Online: <http://www.mapmyride.com/routes/view/613859198> 31km

Foldens/Sweaburg Route: <http://www.mapmyride.com/routes/view/613856342> 17km

Disclaimer

These routes are suggested routes only. The suggested Please Note: routes do not have formal bike lanes and all cyclists ride at their own risk. Road conditions and traffic levels may vary from time of map printing. Caution and common sense must be used when sharing the road with motor vehicles. Oxford County does not assume any liability whatsoever for cyclists travelling upon suggested routes. Oxford County is not responsible for any loss, costs or expenses incurred by cyclists while travelling upon suggested routes.